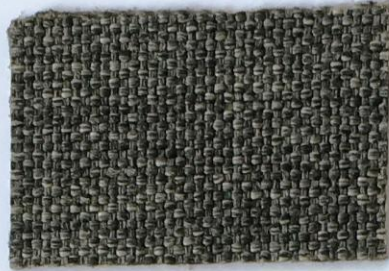


600



200



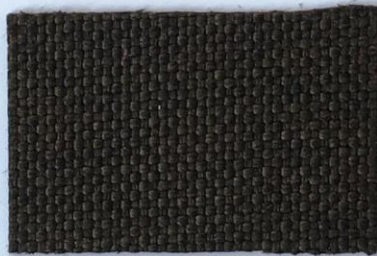
201



203



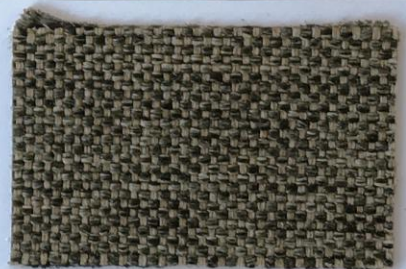
408



405



406



407



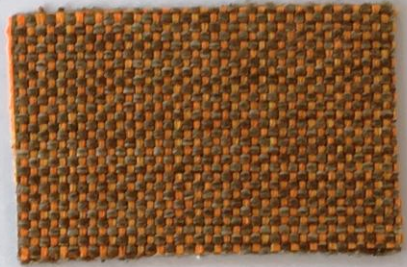
403



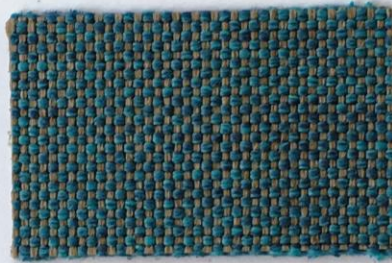
700



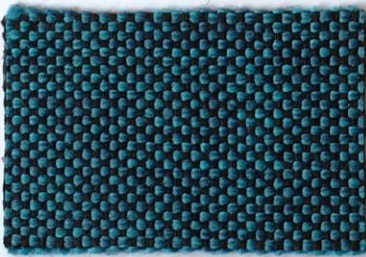
404



308



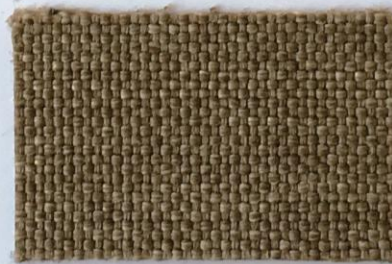
706



705



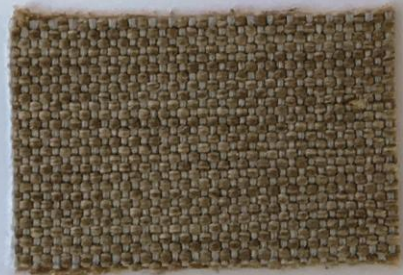
503



400



402



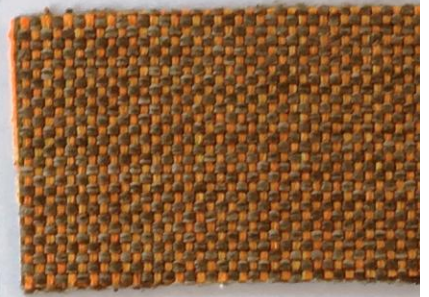
401



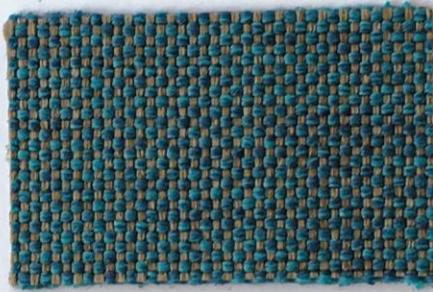
700



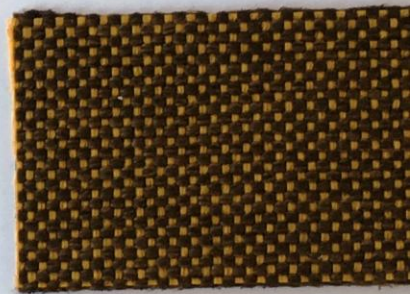
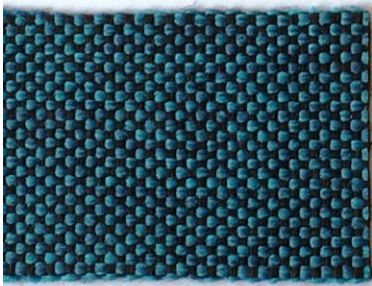
404



308

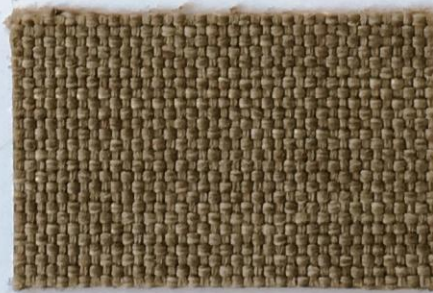


706



705

503

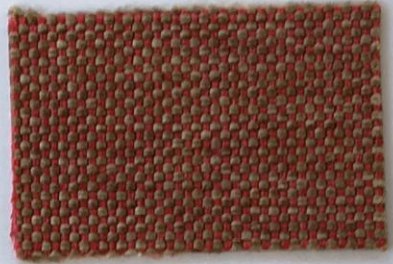


400

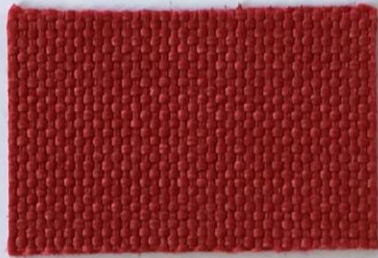




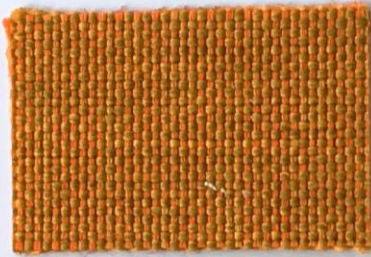
307



302



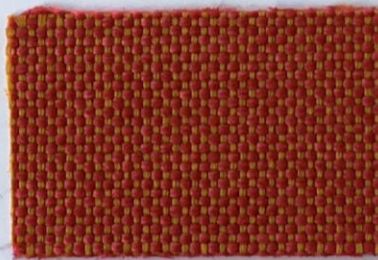
300



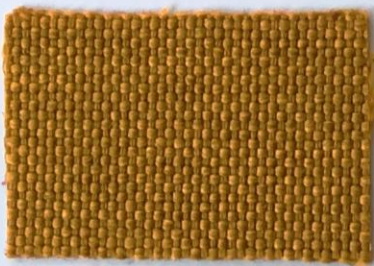
310



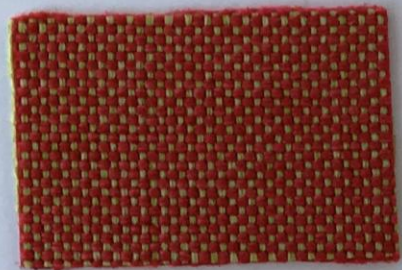
305



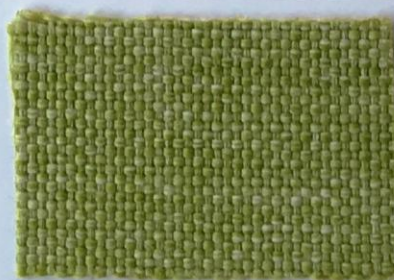
304



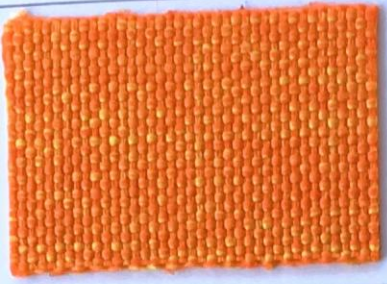
500



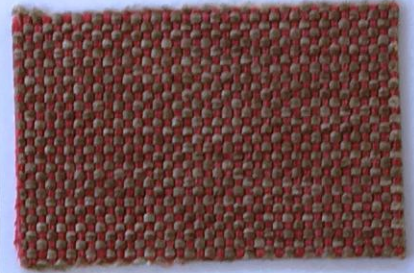
303



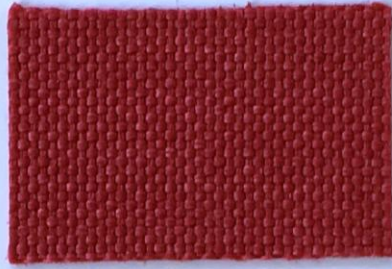
800



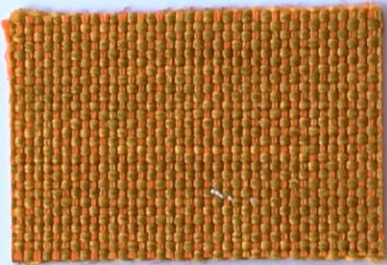
307



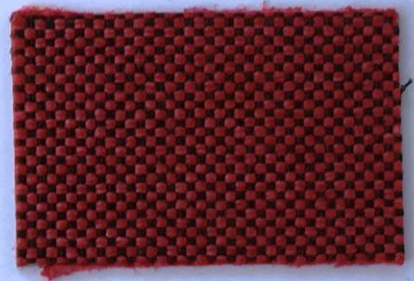
302



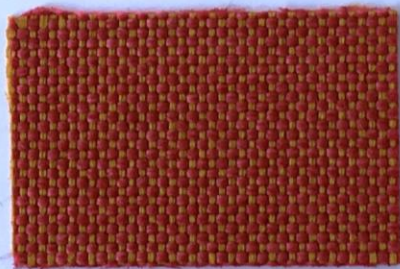
300



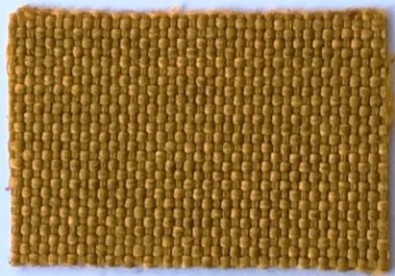
310



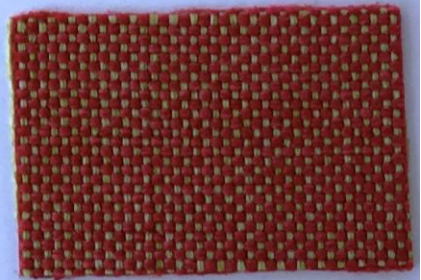
305



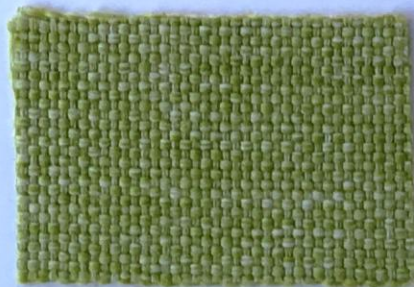
304



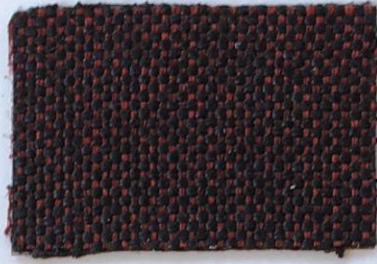
500



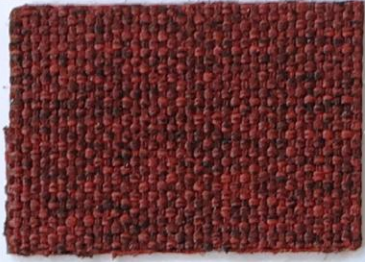
303



800



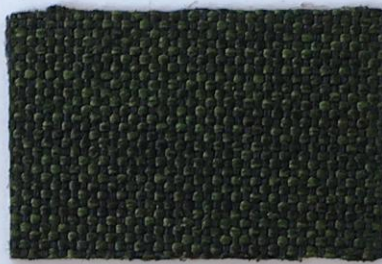
707



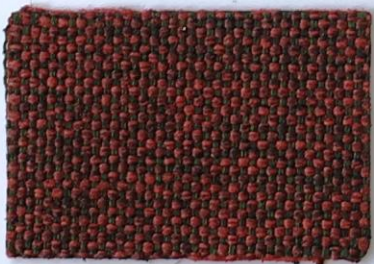
306



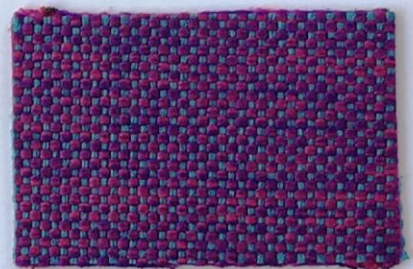
702



703



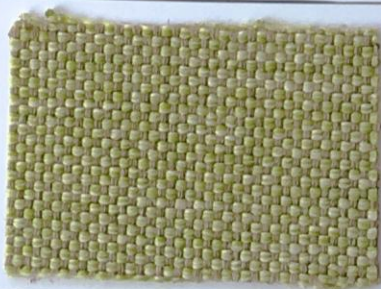
311



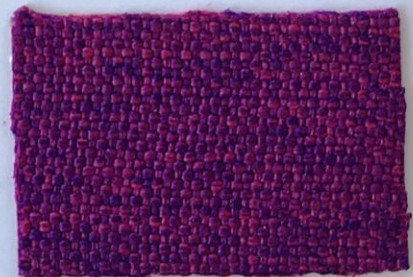
901




802



803



900

		
	301	
		801
102		
	501	
101		309
	701	
111		001

ANGEL COMBO



caratteristiche tecniche - technical details

composizione composition	100% PP FR (nativa)	
altezza width	140 cm ± 2%	
peso weight	350 gr/m ² ± 3%	
solidità delle tinte alla luce color fastness to light xeno - ISO 105 B12	4-5	
solidità delle tinte allo sfregamento color fastness to-light crockmeter - ISO .105 X12	secco / dry 5 umido / wet 4/5	
resistenza al pilling pilling resistance ISO 12945-2	4/5	
resistenza alla stramatura seam slippage ISO	1,50 mm	
resistenza all'abrasione abrasion resistance martindale - ISO 12947-2	≥ 50.000 cicli / rubs	
resistente a resistant to	questo filato è: idrorepellente - antistatico anallergico - antibatterico - irrestingibile this yarn is: water repellent - antistatic hypoallergenic - antibacterial - no-shrink	
norme di manutenzione cleaning		
nota bene please note	consigliato lavaggio a secco dry clean suggest	
ATTENZIONE WARNING	Articolo non idoneo all'uso esterno/outdoor Not suitable for external/outdoor use	
resistenza al fuoco (la resistenza al fuoco dipende dal tipo di schiuma utilizzata) fire retardant (flame retardant performance is dependent upon the foam used)	Italia Italy	UNI 9175 Class 1IM
	Europa Europe	EN 1021-1:2006 EN 1021-2:2006
	Inghilterra England	BS 5852 IS CRIB 5
	Francia France	NF D 60-013:2006 (art. AM 18)
	Stati Uniti U.S.A.	California TB 117:2013
	Navale Nautical	FTP Code 307(88):10 Annex 1 Part 8 ex. IMO res. A 652 (16)

Questi valori sono dati a titolo indicativo e in buona fede e non possono considerarsi in alcun caso vincolanti. L'impiego del prodotto deve essere valutato in base a ciò che si deve realizzare. Non si risponde del suo utilizzo per impieghi impropri. Sono ammesse leggere differenze di colore tra differenti partite.
The overmentioned data correspond to average values communicated in good faith, but they cannot be considered as a contract document. The product use has to be considered in term of what has to be realized. The product cannot be held up responsible when it is improperly use. Slight colors differences among several lots are admitted.